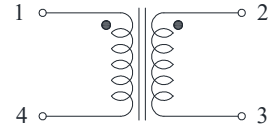
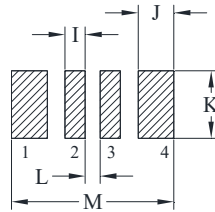
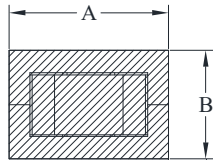


# CYNTEC CO., LTD.

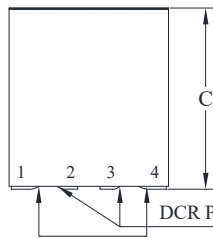
## 乾坤科技股份有限公司

### DELTA P/N: TLM117513F Series

#### Mechanical Dimensions & Schematic

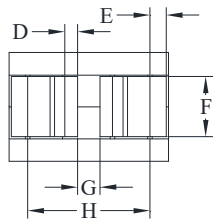


Schematic



DCR PIN 1-4 Measure Points

DCR PIN 2-3 Measure Points



Suggested PWB Layout

- UNIT : mm  
 A = 11.0 MAX  
 B = 7.5 MAX  
 C = 12.7 MAX  
 D = 0.85  
 E = 1.1  
 F = 4.0  
 G = 1.5  
 H = 8.2  
 I = 1.35  
 J = 2.4  
 K = 4.5  
 L = 1.0  
 M = 10.9



#### Electrical Characteristics @ 25°C, 100kHz, 1V

Delta P/N	L (nH) ± 15%	Li (nH) MIN	DCR (mΩ) ± 10%		Isat <sup>1</sup> (A)			Ir <sup>2</sup> (A)	Ir <sup>2</sup> (A)
			1-4	2-3	25°C	100°C	125°C	1-4	2-3
TLM117513F-900	90	63	0.105	0.27	145	123	116	80	50
TLM117513F-121	120	84			106	90	85		
TLM117513F-131	130	91			98	83	78		
TLM117513F-151	150	105			82	70	66		

1. Isat is the DC current which causes the inductance drop to Li.
2. Ir is the DC current which causes the surface temperature of the part increase approximately 40 °C.
3. Operating temperature: -40°C to 125°C (Self-temperature rise included).

**CYNTEC CO., LTD.**  
**乾坤科技股份有限公司**